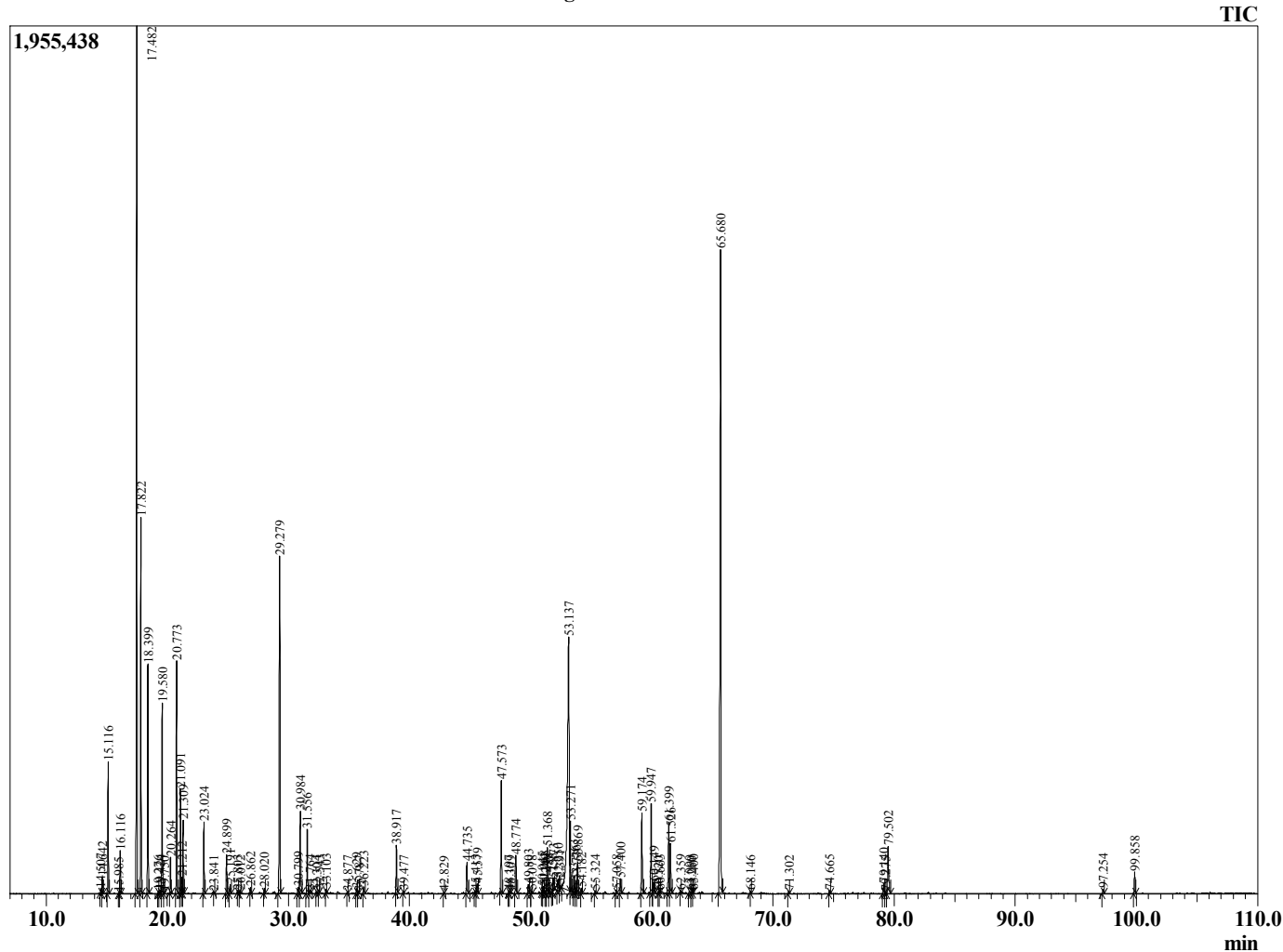


Sample Information

Tansy Blue
 Lot# MOZ5-ZW
 Country: Morocco



Chromatogram Tanacetum annuum



Peak Report TIC	R.Time	Name	Area%
14.507	14.507	Tricyclene	0.06
14.642	14.642	alpha-Thujene	0.24
15.116	15.116	alpha-Pinene	2.04
15.985	15.985	Unidentified	0.01
16.116	16.116	Camphene	0.69
17.482	17.482	Sabinene	14.77
17.822	17.822	beta-Pinene	6.02
18.399	18.399	Myrcene	3.68
19.276	19.276	Octanal	0.03
19.424	19.424	Pseudolimonene	0.06
19.580	19.580	alpha-Phellandrene	3.21
19.750	19.750	delta-3-Carene	0.01
20.264	20.264	alpha-Terpinene	0.61
20.773	20.773	para-Cymene	4.05
21.091	21.091	Limonene	1.78
21.212	21.212	beta-Phellandrene	0.26
21.309	21.309	1,8-Cineole	1.25
23.024	23.024	gamma-Terpinene	1.25
23.841	23.841	Unidentified	0.01
24.899	24.899	Terpinolene	0.69
25.191	25.191	6,7-Epoxyterpinene	0.18
25.803	25.803	Linalool	0.03
26.012	26.012	Isopentyl 2-methylbutyrate	0.04
26.862	26.862	Unidentified	0.10
28.020	28.020	4-Acetyl-1-methylcyclohexene	0.10
29.279	29.279	Camphor	6.69
30.799	30.799	Unidentified	0.11
30.984	30.984	Borneol	1.68
31.556	31.556	Terpinen-4-ol	1.22
31.764	31.764	Unidentified	0.06
32.304	32.304	Methyl salicylate	0.02
32.543	32.543	alpha-Terpineol	0.06
33.103	33.103	alpha-Phellandrene epoxide	0.06
34.877	34.877	Hex-(3Z)-enyl isovalerate	0.02
35.629	35.629	Unidentified	0.08
35.787	35.787	Cuminal	0.03
36.223	36.223	Unidentified	0.14
38.917	38.917	Thymol	0.92
39.477	39.477	Carvacrol	0.03
42.829	42.829	alpha-Cubebene	0.02
44.735	44.735	alpha-Copaene	0.65
45.413	45.413	Sesquithujene isomer	0.06
45.579	45.579	beta-Elementene	0.22
47.573	47.573	beta-Caryophyllene	2.32
48.197	48.197	Unidentified	0.02
48.309	48.309	trans-alpha-Bergamotene	0.02
48.774	48.774	trans-beta-Farnesene	0.79
49.803	49.803	alpha-Humulene	0.18
50.078	50.078	Alloaromadendrene	0.04
50.945	50.945	trans-Cadina-1(6),4-diene	0.09
51.068	51.068	gamma-Curcumene	0.13
51.240	51.240	Ar-Curcumene	0.05
51.368	51.368	Germacrene D	0.99
51.488	51.488	Unidentified	0.08
51.755	51.755	Valencene	0.04
51.873	51.873	beta-Selinene	0.24

R.Time	Name	Area%
52.250	Bicyclogermacrene	0.25
52.391	alpha-Murolene	0.05
53.137	3,6-Dihydrochamazulene	12.08
53.271	3,6-Dihydrochamazulene isomer	1.40
53.563	delta-Cadinene	0.35
53.736	Dihydrochamazulene isomer	0.29
53.869	beta-Sesquiphellandrene	0.65
54.182	Dihydrochamazulene isomer	0.10
55.324	Elemol	0.06
57.058	Spathulenol	0.06
57.400	Caryophyllene oxide	0.33
59.174	5,6-Dihydrochamazulene	1.74
59.947	7,12-Dehydro-5,6,7,8-tetrahydrochamazulene	1.96
60.149	Eremoligenol isomer	0.26
60.520	Unidentified	0.01
60.663	Hinesol	0.05
61.399	7,12-Dehydro-5,6,7,8-tetrahydrochamazulene	1.72
61.526	alpha-Eudesmol	1.13
62.359	beta-Bisabolol	0.03
63.099	Caryophyllene oxide	0.05
63.260	Unidentified	0.02
63.400	Unidentified	0.04
65.680	Chamazulene	16.85
68.146	Unidentified	0.02
71.302	Phytone	0.05
74.665	Unidentified	0.06
79.140	Unidentified	0.22
79.275	Geranyl-para-cymene	0.03
79.502	Unidentified	1.33
97.254	Unidentified	0.08
99.858	Unidentified	0.49
		100.00